
Informatics for Integrating Biology and the Bedside



I2b2 Install: Full VM Server
Windows Installation Guide

TABLE OF CONTENTS

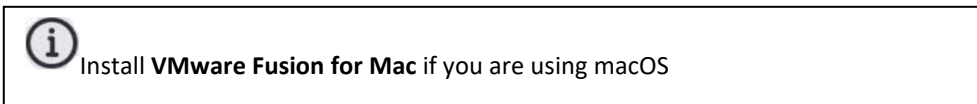
Table of Contents

1 INSTALL	3
1.1 Installing the VMware Player.....	3
1.2 Installing the i2b2 VMware image application	3
2 EXECUTE	4
2.1 Running the VMware Server Console	4
3 CONFIGURE	5
3.1 Determine the IP Address	5
3.2 Configure the workbench (OPTIONAL)	6
4 LICENSES	7

1 INSTALL

1.1 Installing the VMware Player

1. Download VMware Player from <https://www.vmware.com/products/workstation-player.html>
2. Install VMware player into a directory of your choice



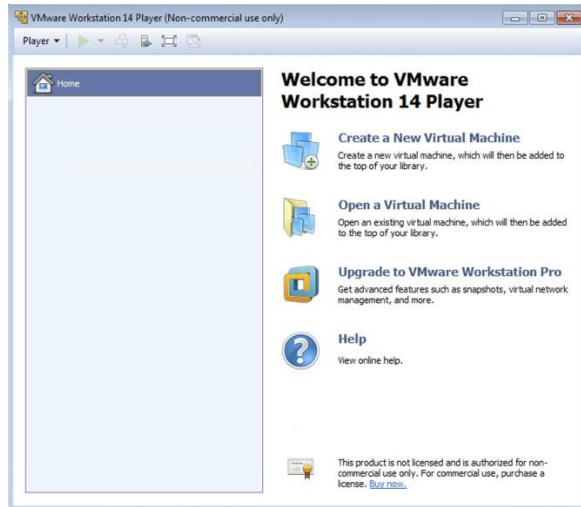
1.2 Installing the i2b2 VMware image application

1. The complete VMware i2b2 server image pre-installed in CentOS Linux environment is available for download on <https://www.i2b2.org/software/index.html>
2. Click on **i2b2VMware** zip file under Download to download it your local machine
3. Extract all the files from the downloaded zip file into C:\Virtual Machines\.
4. A folder called **i2b2 Server** will be created automatically when the files are extracted from the zip file to the Virtual Machine directory

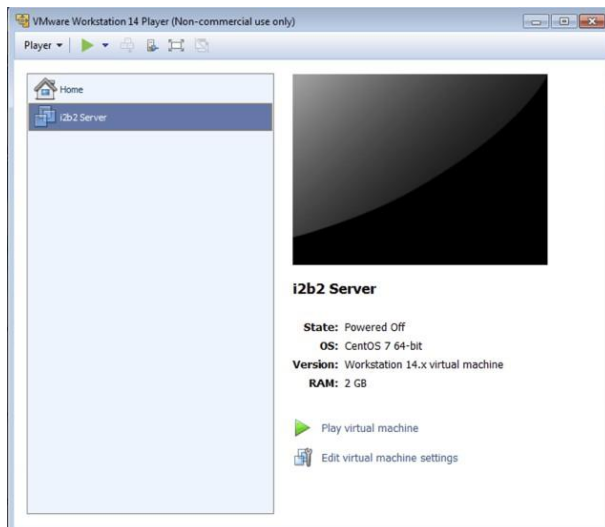
2 EXECUTE

2.1 Running the VMware Server Console

1. Click on the start menu.
2. Go to Programs -> VMware -> VMware Workstation Player



3. Click on the Open Virtual Machine icon
4. Navigate to the extracted VM directory and select the i2b2 Server virtual disk file
5. **i2b2 Server** will be added to the list and select it and click Play Virtual Machine

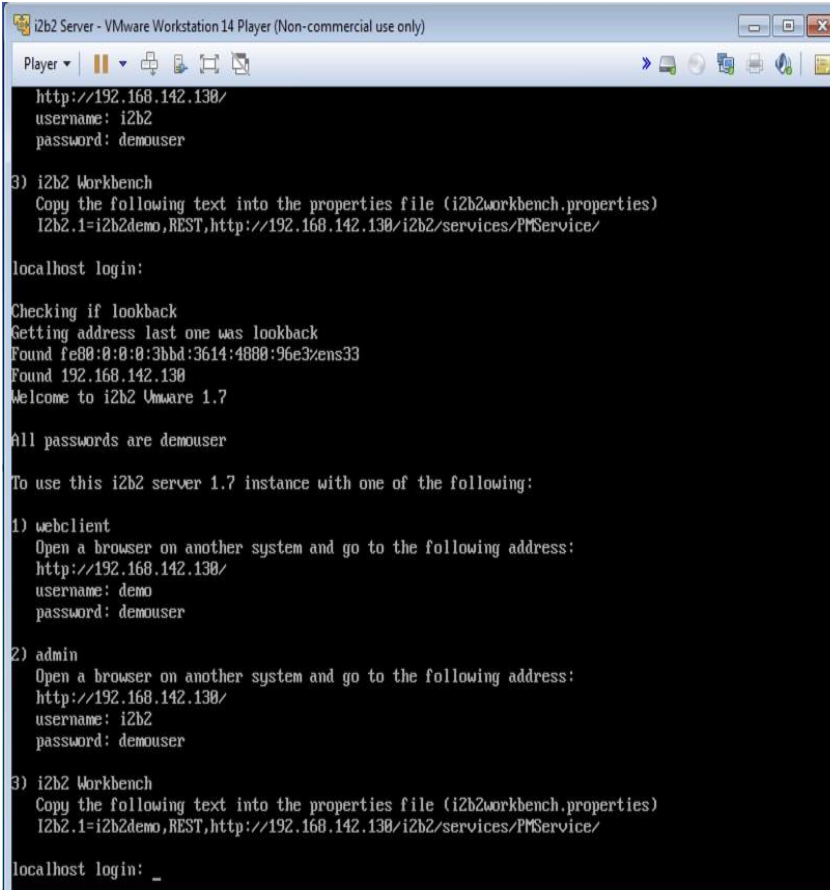


3 CONFIGURE

3.1 Determine the IP Address

1. Once you start the Virtual Machine the following will appear in the terminal window

You may have to hit Enter key on your keyboard to display the Login details



```
i2b2 Server - VMware Workstation 14 Player (Non-commercial use only)
Player
http://192.168.142.130/
username: i2b2
password: demouser

3) i2b2 Workbench
Copy the following text into the properties file (i2b2workbench.properties)
I2b2.i=i2b2demo,REST,http://192.168.142.130/i2b2/services/PMService/

localhost login:

Checking if lookback
Getting address last one was lookback
Found fe80:0:0:3bbd:3614:4888:96e3:ens33
Found 192.168.142.130
Welcome to i2b2 VMware 1.7

All passwords are demouser

To use this i2b2 server 1.7 instance with one of the following:

1) webclient
Open a browser on another system and go to the following address:
http://192.168.142.130/
username: demo
password: demouser

2) admin
Open a browser on another system and go to the following address:
http://192.168.142.130/
username: i2b2
password: demouser

3) i2b2 Workbench
Copy the following text into the properties file (i2b2workbench.properties)
I2b2.i=i2b2demo,REST,http://192.168.142.130/i2b2/services/PMService/

localhost login: _
```

2. Copy the URL displayed under the webclient section and paste it in your browser to access the i2b2 web client

Example, the web-based client can be accessed by going to: <http://192.168.142.130/> where 192.168.142.130 is the IP address

3.2 Configure the workbench (OPTIONAL)

1. Install the i2b2 workbench (client based). The i2b2 Workbench Users Guide can be used as a reference for the installation process.
2. In your target's i2b2workbench directory, edit the file i2b2workbench.properties in the line that begins with i2b2.1, change the following:
 - HarvardDemo to i2b2demo
 - services.i2b2.org to the IP above
 - PM to i2b2.

For example: I2b2.1=i2b2demo, REST,http://192.168.142.130/i2b2/services/PMService/

3. Launch C:\i2b2workbench\client\Windows\i2b2workbench.exe

4 LICENSES

The i2b2 source code is licensed under the Mozilla Public License 2.0. This includes but is not limited to all code in the `edu.harvard.i2b2.*` package namespace.